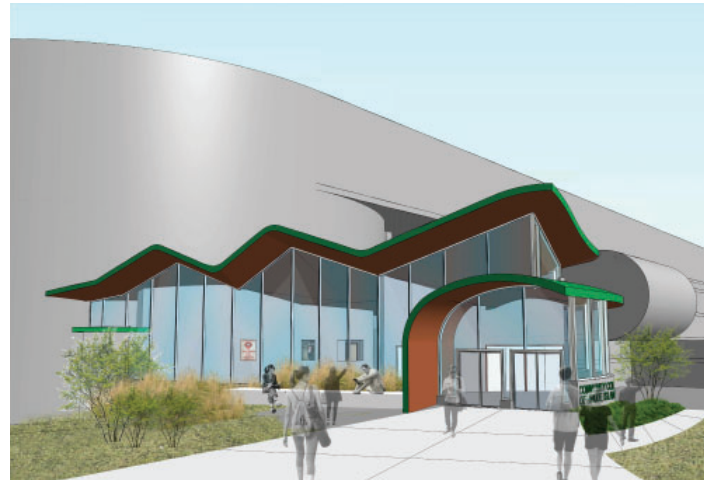


# COMMUNITY COLLEGE OF RHODE ISLAND - ENTRY ENCLOSURE WARWICK, RHODE ISLAND



## PROJECT SUMMARY:

Provided a construction documents cost estimate for the renovated 3,128 gsf ramp enclosure. This estimate included structural cast-in-place concrete forming, special formed structural steel components, architectural wood case work, insulated panels, thermoplastic membrane, ADA compliant door activators, sound-absorbing ceiling units and panels, facility fire-suppression, water-service piping and sprinkler system, upgraded HVAC units, electronic safety and security systems, and extensive earthwork and exterior improvements including water utility transmission and distribution and storm water conveyance (This estimate allocated MBE/ DBE/WBE/ Apprentice Participations).

**LOCATION:** Community College of Rhode Island, Warwick RI

**SCOPE OF WORK:** Professional Estimating

### FEATURES:

- Addition & Renovation
- Moderized and Sustainable New Entrance
- Extensive Earthwork
- Fire Protection & Life Safety Improvement
- Security Systems Installation



**KEOUGH**  
CONSTRUCTION MANAGEMENT