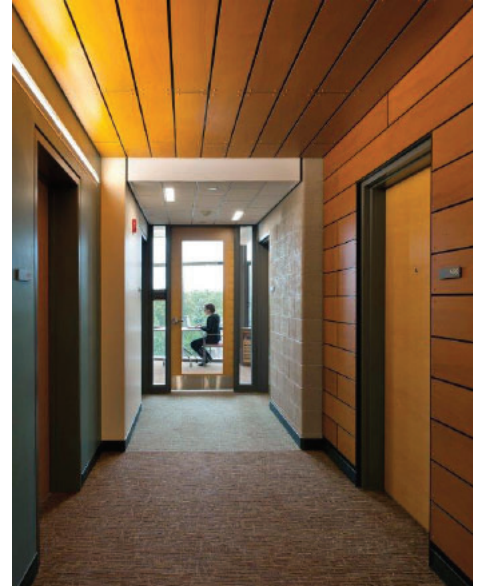
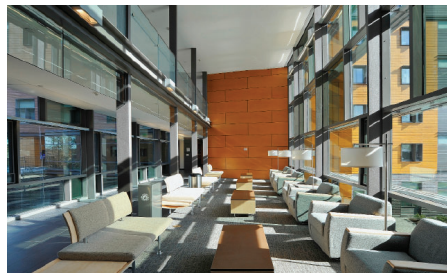


Hillside Residence Hall

University of Rhode Island, Kingston Campus Rhode Island



The Hillside Resident Hall is one of the largest and most energy efficient buildings on the University's Kingston Campus. This new construction, \$42 M, 120,000 sqft building received LEED Gold certification for its sustainability sites, water efficiency, energy & atmosphere use, recycled materials and resources, indoor environmental quality, innovation & design, and regional priority. The 5-story interior of the building consists of 429 bedrooms with supporting residence life amenities, 27 student lounges, multipurpose rooms, classrooms, an elaborate glass bridge with sky lounges and ADA compliant accessibility features. Additionally, the interior contains high performing tinted glass windows, sun shades, vertical fins at the bedroom windows, and passive cooling devices which reduces the buildings need for additional electricity. The exterior of this facility is comprised of 64 solar panels, two storm water rain gardens and bioretention areas (with the use of pervious pavers within the student courtyards), as well as a comprehensive landscape designed to control and filter storm water.



PROJECT SUMMARY:

Scope of Work:	New Construction
RKC Role:	OPM & Estimating
Features:	ADA Compliance
	LEED Gold
	Precast foundation
	Store Front Facade
	ADA Compliance
	Fire Code/Life Safety Standards
	Monitoring Systems
	MEP Furnish and Installation
	Recreational Site
	Resurfacing
	Site Reinforcement
	Water Distribution
	Bioretention Areas
	Solar Arrays



KEOUGH
CONSTRUCTION MANAGEMENT