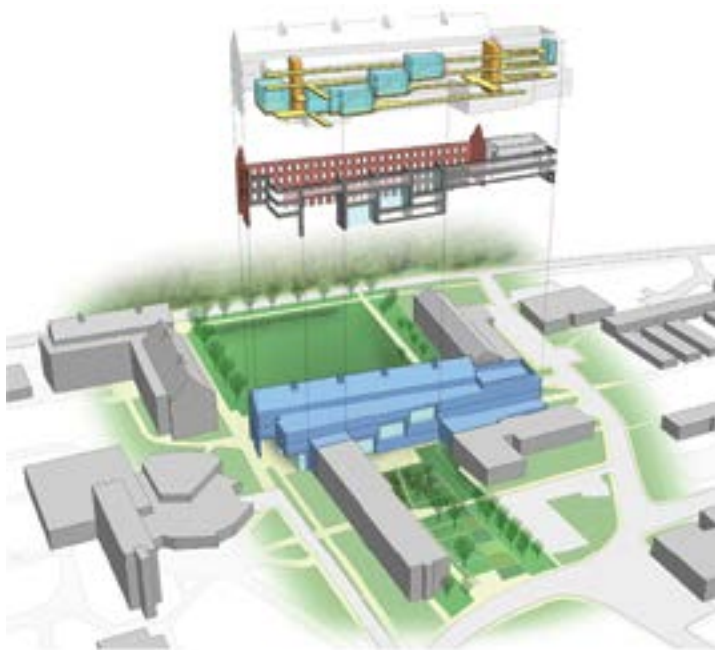


University of Rhode Island

College of Pharmacy



This new facility will allow the complete College of Pharmacy to be under one roof for the first time. Conceived as a LEED certified silver building, the facility will be the second phase of a larger North District Master Plan which will create a new quad for all the life sciences on the URI Kingston Campus.

The building will house college teaching laboratories and classrooms, research laboratories, faculty and staff offices, administrative offices and outreach programs. Divided into two disciplines, biomedical pharmaceutical sciences and pharmacy practice, the building will integrate these two disciplines for teaching pharmacy. Core labs will include programs for pharmaceuticals manufacturing, pharmacognosy, 3D visualization and histology. A major component to the project, which reflects the program's commitment to clinical based teaching, includes a working patient clinic where students will get hands-on experience. Other program elements include a small current Good Manufacturing Facility (cGMP) which will promote the relationship between the URI and the RI Business Community at large.



PROJECT SUMMARY:

Location:	Kingston, RI
Completed:	2012
Total S.F.	147,774
Features:	Chemistry, Biology, cGMP, Model Pharmaceutical, Teaching & Research Labs
LEED:	Silver